

# Wireless Intelligence

## Executive Analytics and Reporting Tool for Service Provider Wi-Fi

### FEATURES

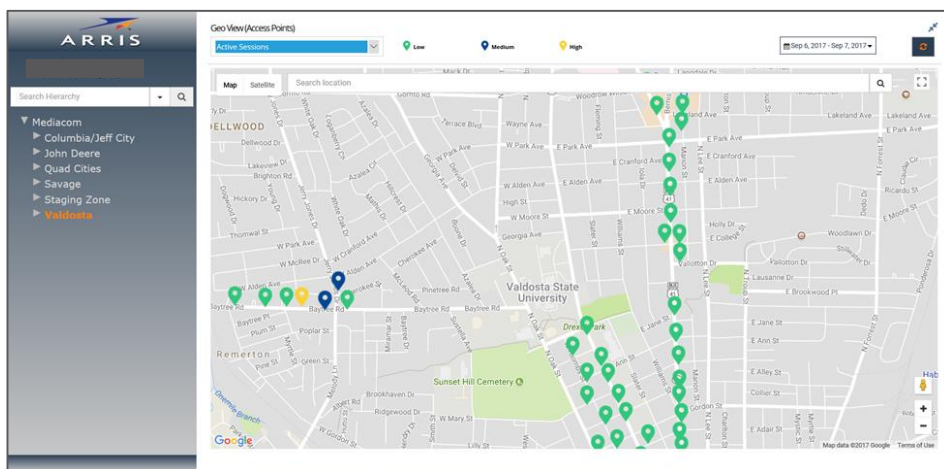
- Provides in-depth reports and analysis on clients, utilization, sessions, and subscriber data consumption.
- Fully virtualized, hosted solution.
- Easily customized.
- Presents system data from core network elements and wireless access devices like Access Points.
- User friendly APIs available for integration with third-party systems.
- Secure data access maintains privacy.

### PRODUCT OVERVIEW

Executives know that clear and timely visualization of system data is critical to decision making. Trends are more easily revealed. Large amounts of data can be consumed. Issues are more clearly seen. Good visualization tools help inform the decisions that will lead to the success of a business venture.

ARRIS's Wireless Intelligence provides analytics, dashboards, and reports for service provider Wi-Fi and other wireless solutions. The tool gathers data from the various system components and presents it in a user-friendly, customizable interface, enabling the service provider to better and more efficiently manage the network. The platform allows executives, operations and marketing personnel to quickly visualize their deployed inventory of access devices and understand the utilization of each network device.

Graphically presented on a map, the user can drill down on each device to determine its location, zone, operational status and vertical market (Public, MDU, SMB, Hospitality, Venue etc.). Utilization details available from Wireless Intelligence include number of sessions, number of clients, bytes received and transmitted, RSSI (Receive Signal Strength Indication) and busy hour usage. Wireless Intelligence gives service providers the powerful data they need to recognize trends and ensure optimal performance.





**WIRELESS INTELLIGENCE: A FULLY VIRTUALIZED, HOSTED MANAGEMENT SOLUTION**

Wireless Intelligence is hosted by ARRIS and managed and monitored 24/7 by our network operations team. This maximizes system up time and provides a secure environment for data protection. It ingests data from diverse formats and provide pre-built analytics and reports:

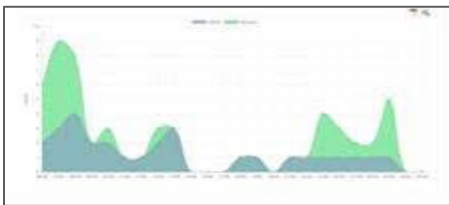
- By geography, AP location, status, utilization, clients by AP/device, and signal quality.
- By SSID type: private, public.
- By verticals: multi-dwelling unit, hospitality, small-medium business, public, education and government.
- By network, region, state, city, zone and property.
- Powerful analytics set: AP/device utilization by time period, OS type, session duration, etc..

**FEATURES**

Geographic Intelligence	Status Intelligence	Detailed Analysis	User Experience Analysis
Geographical device status	Connected/disconnected	Select connected or disconnected APs	Coded in color to provide an interactive experience
Geographical device utilization, sessions and clients	Low, medium and high	Historical drill down and busy hour	Regions, state, city and property
Data visualization	Sessions, client, session duration, data rate and client OS	Historical, top APs, by regions, state, city and property	Analysis of user types (e.g. OS) and behavior (e.g. connections, dwell time)



Access Point Inventory



Utilization Data



Over and Under-utilized APs

**WHY ARRIS?**

ARRIS is uniquely dedicated to providing wireless solutions for service providers and offers a best-of-breed, end-to-end solution for Wi-Fi. ARRIS is the leading provider of carrier-grade broadband communication systems to cable operators and telcos. We know how critical it is to have timely, quality decision-making information to ensure customer satisfaction and business profitability.

**MORE INFORMATION**

Contact your ARRIS Account Manager or visit

<http://www.arris.com/solutions/carrier-grade-wi-fi/>

Part Number	Description
DSH1001	ARRIS Wireless Intelligence License per AP