

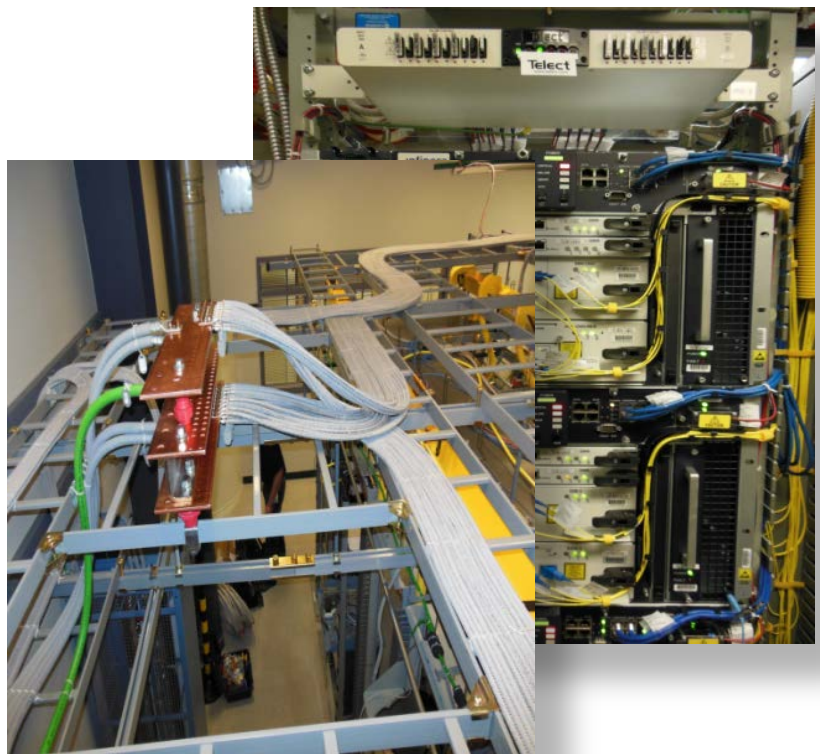
# Network Deployment Project Management EF&I



## ARRIS Global Services Case Study

### REQUIREMENTS :

- Site Survey
  - Turnkey List of Materials Management
  - Electronic Design Package
  - Fiber Characterization
  - Full Installation (racks, power, equipment)
  - 24 hr Bit Error Rate Testing
  - Site Audit
  - As-Builts Documentation
- ARRIS Solution
  - Program Management Office
  - Project Management
  - Engineering Teams
  - Vendor Management
  - Documentation Management
  - Resource Management
- Benefits
  - Expert Engineering and Install
  - Manage Risk
  - Accelerate Deployments



### SERVICE OVERVIEW:

ARRIS' customer is a market leader in DWDM equipment redefining the very nature and structure of the optical network. Our customer's products offer simpler network engineering and operations, faster time to service, lower latency, and a more flexible optical transport layer that integrates more effectively with modern IP and Ethernet services. Our customer's clients have benefitted from cost-effective transport solutions that streamline their business processes and deliver more rapid revenue from new services.

---

## The Challenge

The customer has teamed up with ARRIS Professional Services to provide full turnkey EF&I services along several routes for a major US Long Haul Telecom provider. Route consisted of 12 sites (two terminal, 10 AMP) with a distance average of 45km between sites. In order to provide a turnkey solution for the customer and its clients, ARRIS Project Management team had to first understand the complexities of the engagement including understanding materials procurement, DTNX switch installation and commissioning, DTC, OTC, ATN switch installation and commissioning, infrastructure installation and DC power and grounding.

ARRIS had to overcome a number of challenges including working inside of live traffic fiber routes during very tight maintenance windows. ARRIS worked directly with the telecom provider to manage sites access and maintenance schedules, created detailed floor plans, overhead iron structures, equipment racks and materials lists and equipment delivery access across multiple sites, simultaneously.

## The Solution

ARRIS Professional Services provided end-to-end project management services for the entire project which included creating detailed project plans, schedule, task, scope, time, cost, resource and quality management. Additionally, ARRIS provided all LOM, EDP, FC, Install, Commissioning and “Make Ready” services consistent with Telcordia™ 1275 standards. The work was performed by one of ARRIS’ telecom engineering teams including two senior installation techs and a test engineer.

ARRIS Professional Services strives to exceed customer expectations and that was proven in the work that continues to be performed for our customer. ARRIS was successful in working around short maintenance window scheduling, correcting fiber and technical issues beyond project scope and creating design specifications for the customer’s unique environment.

## ARRIS Global Services Values

### **Accelerate time to market:**

Stay competitive with rapid deployment of new services

### **Reduce costs:**

Contain costs on deployment, integration, and support

### **Maximize revenue and profits:**

Optimize operations, ensure service quality, increase customer loyalty, grow revenue and profit margins

## Why ARRIS ?

### **Multi-technology experience that is unique in the industry:**

ARRIS has designed, delivered, and optimized end-to-end network solutions for service providers.

### **Flexible business model and approach:**

ARRIS can build a customized operations solution for virtually any network operations requirement.

### **World-class support:**

ARRIS provides support from committed and highly trained, experienced professionals, complete with state-of-the-art local support centers, test labs, and repair depots.

### **Voice, Data, and Video Technology leadership:**

ARRIS has a wealth of experience and expertise in introducing and operating new technology network systems.

©ARRIS Enterprises, Inc. 2015 All rights reserved. No part of this publication may be reproduced in any form or by any means or used to make any derivative work (such as translation, transformation, or adaptation) without written permission from ARRIS Enterprises, Inc. (“ARRIS”). ARRIS reserves the right to revise this publication and to make changes in content from time to time without obligation on the part of ARRIS to provide notification of such revision or change. ARRIS and the ARRIS logo are all trademarks of ARRIS Enterprises, Inc. Other trademarks and trade names may be used in this document to refer to either the entities claiming the marks and the names of their products. ARRIS disclaims proprietary interest in the marks and names of others.

©ARRIS Enterprises, Inc. 2015 All rights reserved. No part of this publication may be reproduced