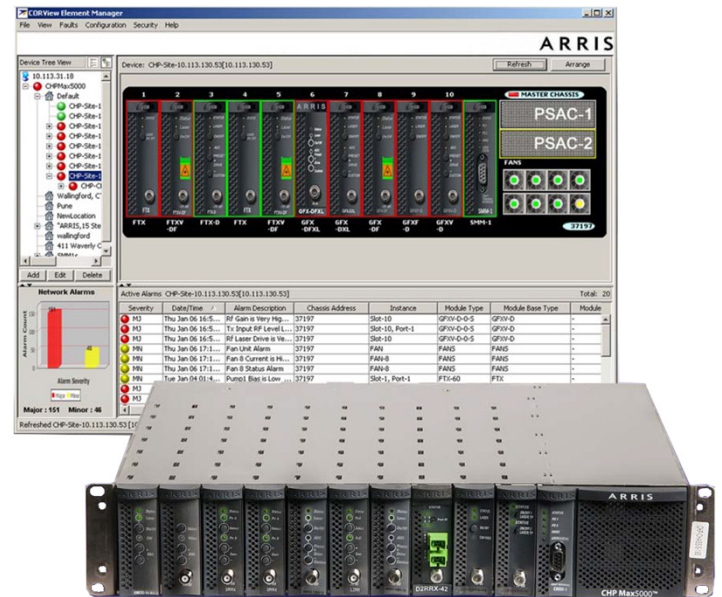


CHP Max Headend Optics Platform

CORView™ Element Management System

FEATURES

- Enables Topology, Configuration, Fault, and Security Management for Inside Plant and Outside Plant products that are equipped with digital return capability
- Management of up to 150 CHP Max SMM modules from a single server with increased scalability in future
- Distributed client/server application with intuitive, user-friendly Graphical User Interface (GUI)
- Remotely launched through standard web browser via Java Web Start technology
- Software Download feature provides remote and batch upgrade of the CHP Max modules



PRODUCT OVERVIEW

The CORView™ Element Management System (EMS) allows operators to setup, control, and monitor any CHP Max modules and appropriate outside plant products, including CHP Max optical transmitters, receivers, and EDFAs. In addition, CORView EMS version 3.5 and higher supports 1-way monitoring of Opti Max™ nodes and Trans Max® hardened field hubs equipped with digital return. As a result, the CORView EMS greatly simplifies operations and management, helping operators to improve services and enhance their subscribers' experiences.

Topology Management (CHP Max, Opti Max/Trans Max products equipped with digital return)

- Auto discovery and Topology display in Tree, List, and Chassis Views
- Inventory Search allows the user to search for and generate reports on specific modules, chassis, and outside plant products as specified

Configuration Management (CHP Max products only)

- Configuration dialog allows set up and control of optical and RF parameters
- Remote firmware upgrade of CHP Max5000® modules

Fault Management (CHP Max, Opti Max/Trans Max products equipped with digital return)

- Determines fault conditions in the network by proactive polling and asynchronous SNMP traps
- Alarm conditions indicated by the GUI client with colors and updated in real time
- Generate alarm history report from historical alarm database

Security Management

- User Authentication and Authorization for functions as well as specific network elements

Digital Element Management System (DEMS)

To extend management visibility into other active network elements in the outside plant, CORView management capability has been expanded to include Digital Return-based Optical Nodes and Remote Optical Hubs (ARRIS Opti Max 6000, Opti Max 4100, Opti Max 4120, Opti Max 2741, NC4000, NH VHub, Trans Max 4100, SG4000, MBN100, and VSN200).

FEATURE COMPARISON

Feature	Enterprise	Lite
Module Discovery, Topology, Active Alarms, Configuration	✓	✓
Software Download	✓	✓
Number of SMMs Supported	150	15
Multiple Remote Client Support	✓	
Persistence (Database) for CHP Chassis and Modules Information on PC Restarts	✓	
Security (User Authentication and Authorization)	✓	
Group CHP Chassis by Location; Assign Users to Locations	✓	
Inventory Search and Reports	✓	
E-mail Notification On Alarms	✓	
Alarm Task Bar; Alarm Banner Support	✓	
Network Alarms Graph	✓	
Historical Alarms Search in Database	✓	

SPECIFICATIONS

Enterprise Computer Requirements

Operating System	Windows 2012 Server (64-bit OS Only)
Processor	Intel Quad Core processor or better
Memory	16 GB RAM or more
Hard Disk Space	128 GB
Database	My SQL 5.x (Supplied)

Lite Computer Requirements

Operating System	Windows 7, Windows 8 or Windows 10 OS (64-bit OS Recommended) (Pro Edition or higher)
Processor	Intel Quad Core 2.6 GHz processor or better
Memory	16 GB RAM or more
Hard Disk Space	32 GB

ORDERING INFORMATION

Model Name	Description
COR-SYS-SRV-L2	CORView Element Management System Software; Number of SMM Devices: Up to 150
COR-SYS-SRV-L2-DEMS	CORView Element Management System Software with Digital EMS for Node Monitoring; Number of SMM Devices: Up to 150

Demo versions are available for evaluation purposes, please contact your ARRIS Representative for more information.

RELATED PRODUCTS

CHP Chassis	Optical Nodes
Power Supplies	Optical Passives
Management Module	Installation Services

Customer Care

Contact Customer Care for product information and sales:

- United States: 866-36-ARRIS
- International: +1-678-473-5656

Note: Specifications are subject to change without notice.

Copyright Statement: © 2019 ARRIS Enterprises LLC. All rights reserved. ARRIS and the ARRIS logo are trademarks of ARRIS International plc and/or its affiliates. All other trademarks are the property of their respective owners. No part of this publication may be reproduced in any form or by any means or used to make any derivative work (such as translation, transformation, or adaptation) without written permission from ARRIS International plc ("ARRIS"). ARRIS reserves the right to revise this publication and to make changes in content from time to time without obligation on the part of ARRIS to provide notification of such revision or change.

1513009_CHPCORView_DS_09JAN19

01/2019 EA-29391

Ask us about the complete Access Technologies Solutions portfolio:

Headend Optics-CHP