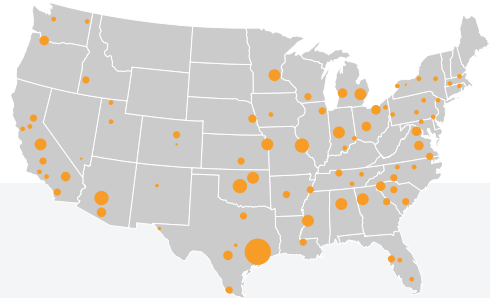


NEIGHBORHOOD

FIXED WIRELESS BROADBAND (FWB)

WHAT IS FWB AND WHY NEIGHBORHOODS?

FWB will deliver high speed internet via radio waves (4G/LTE, CBRS, 5G) to ~4m mostly rural US customers

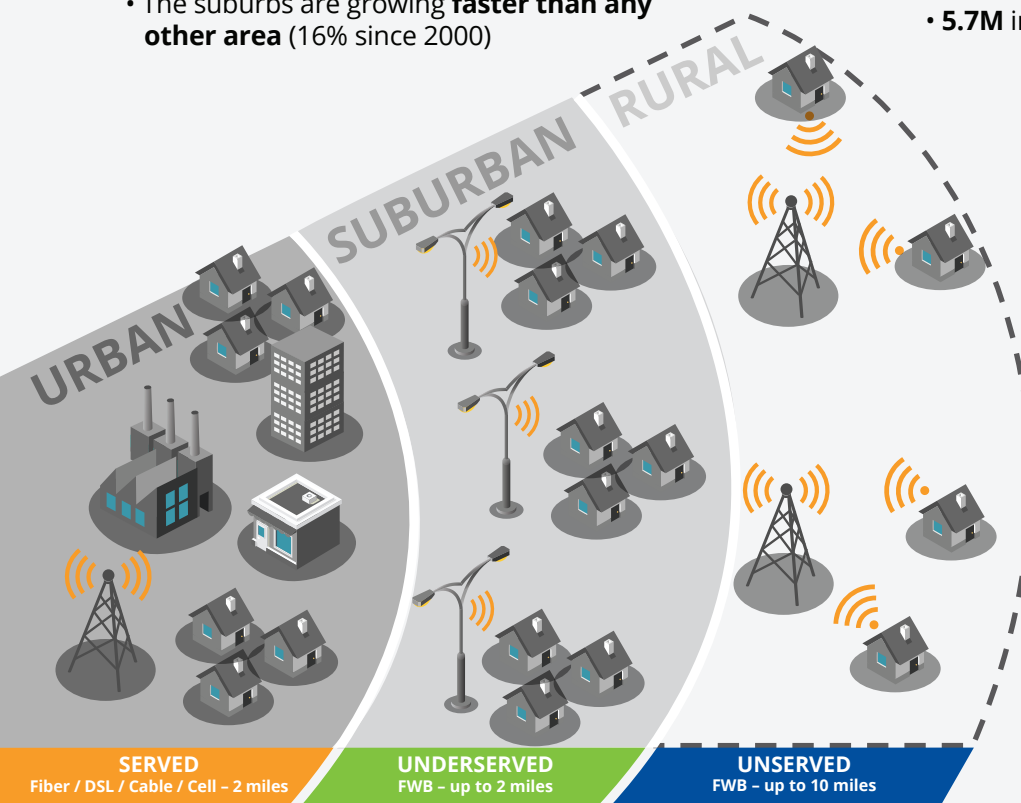


SUBURBS ARE UNDERSERVED*

Nearly half of all Americans live in the suburbs (150M)

- **29M** live in suburbs with no access to **25Mbps** or higher broadband
- The suburbs are growing **faster than any other area** (16% since 2000)

- **More than 100 metro areas** have low subscription rates
- **5.7M** in the top 10 metro areas alone



WHY NEIGHBORHOODS? WHY NOW?

While FWB's primary use to date has been to reach unserved rural areas, technological improvements are now making possible:

- A more economical way of reaching dense suburban environments
- A rapid-response deployment to competitive incursions
- Access to new spectrum, like CBRS, and other tiers of service to urban areas

* Source: A. Tomer, E. Kneebone, R. Shivaram. Signs of Digital Distress. The Brookings Institution. Sept 2017. This phenomena of underserved broadband is being observed in metro areas across the globe.

NEIGHBORHOOD APPROACH

SUBURBAN NEIGHBORHOODS

are underserved, have critical mass, and the desire for affordable 50-100Mbps broadband

BENEFITS



High number of homes passed with dense neighborhood deployments



[Ruckus Access Points](#) rapidly deployed to small-cell poles



Indoor, self-installed [ARRIS Home Gateway](#) reduces deployment and total customer acquisition costs

To learn more about a neighborhood approach to FWB, please [contact us](#).